

opti cart



EFFIZIENTLLC.COM

Made in the USA

EFFIZIENT

Gain Efficiency in Material Handling

Our **CombiCart** holds up to 12 bins, up to 12 shelves or a combination of both. It “combines” the benefits of our Replenishment Cart with the benefits of our Conveyor-Tray-Cart while utilizing additional vertical space. Bins, shelves and a large variety of accessories like Dividers and Separators keep products organized.



Benefits:

- ❑ Improved back-room organization
- ❑ Reduced time and labor for shelf replenishment
- ❑ Decreased inventory levels through product mobility
- ❑ Maximum adaptability to merchandise characteristics
- ❑ Bins simply slide on and are easy to access
- ❑ Sliding shelves for easy product access
- ❑ No tools required for assembly and disassembly
- ❑ Compact design for in-aisle maneuverability
- ❑ Tested and rated for 1,100 lb. stationary; 650 lb. in motion
- ❑ Molded plastic will not fade, dent or discolor

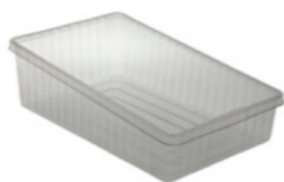
Specifications

Dimensions (W x L):	23.3" x 32.1"	Load Capacity Static:	1,100 lb.
Total Height:	75"	Load Capacity Dynamic:	650 lb.
Effective Height:	67"	Weight as shown:	94 lb.

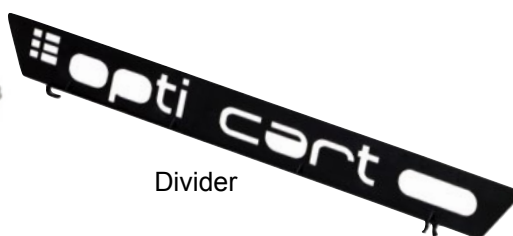
Accessories



Divider for 23" Tray



Cosmetic Tray



Divider



Separator Pouch



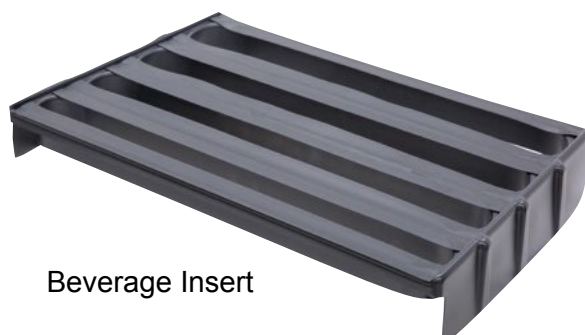
Label Holder



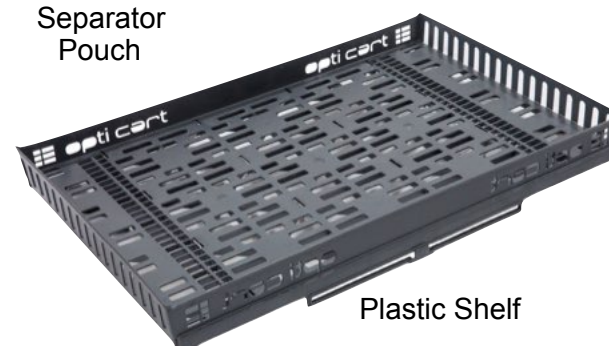
Separator



23" Tray



Beverage Insert



Plastic Shelf